

Populism in Place: The Economic Geography of the Globalization Backlash

J. Lawrence Broz
University of California, San Diego

Jeffrey Frieden
Harvard University

Stephen Weymouth
Georgetown University

May 2020

Prepared for a special issue of *International Organization*.

Abstract

A populist backlash to globalization has ushered in nationalist governments and challenged core features of the liberal international order. Although startling in scope and urgency, the populist wave has been developing in declining regions of wealthy countries for some time. Trade, offshoring, and automation have steadily reduced the jobs and wages of industrial workers since at least the 1970s. The decline in manufacturing employment initiated the deterioration of social and economic conditions in affected communities, exacerbating inequalities between depressed rural areas and small cities and towns, on the one hand, and thriving cities, on the other. The global financial crisis of 2008 catalyzed these divisions as communities already in decline suffered deeper and longer economic downturns than metropolitan areas where superstar knowledge, technology, and service-oriented firms agglomerate. We document many of these trends across the US and Europe, and demonstrate that populist support is strongest in communities that experienced long-term economic and social decline. Institutional differences in labor markets and electoral rules across developed democracies may explain some of the variation in populists' electoral success. Renewed support for the liberal international order may require a rejuvenation of distressed communities and a reduction of stark regional inequalities.

Introduction

The specter of a backlash against globalization is haunting the world. Brexit, the election of Donald Trump, the rising influence of populist and nationalist parties in Europe: despite major differences in form, content, and degree, all share a hostility to aspects of the integration of national economies and politics, and a rejection of existing political institutions, political parties, and politicians. This upsurge of hostility to some of the founding principles of the modern international economic and political order has now affected many advanced industrial countries.

The populist backlash against globalization poses a serious threat to the liberal international order (LIO). As discussed in the introduction to this special issue, populist parties and their leaders – most notably Donald Trump – challenge the core principles and institutions of the LIO. The fact that the backlash is strongest among voters and parties from wealthy democracies means that challenges to the LIO come from “within.” An understanding of the causes of support for these nationalist, anti-integrationist movements is therefore central to any explanation of the viability of the LIO – or of what may come to replace it.

There are clearly identifiable economic sources of the current globalization backlash. There are, of course, cultural, ethnic, and other components as well. Still, the nationalist political movements in the developed world that have intensified their attack on international integration share strong and important economic features.

This paper makes three points about the current reaction to integration. It provides suggestive evidence about the importance of these three points. It then discusses how future research might help us better understand the backlash against globalization.

The first analytical point is that the backlash has been building for a long time. The decline of traditional manufacturing employment in the OECD began in the early 1970s. Technological change and competition from low-wage developing countries devastated many OECD industries through the 1970s and 1980s, with turbulent effects on labor markets. The full entry of China and other new

manufacturing exporters into the world economy after 2000 came on top of a long-standing trend that had already eroded the position of many previously well-paid industrial workers in North America and Western Europe.

The second point is that these broad economic trends affect *communities*. Their direct impact on individuals who lose their jobs or have their wages cut initiates a more widespread impact on local communities. Jobs and income decline, property values fall, the local tax base erodes, more educated residents leave, and local public services deteriorate. After a couple of decades the city, town, or neighborhood is reeling from waves of economic and social shocks, affecting everything from school quality to opioid addiction. There are strong geographic patterns to the populist backlash, and political choices are powerfully affected by local socio-economic conditions. The regional component of these trends is heightened by the growing importance of firm-based economic advantages, and of local network externalities. This reinforces economic divergence among communities. The most productive firms and their employees benefit from deeper integration, while less productive firms and their workers face globalization with deep insecurity. And the superstar firms tend to concentrate spatially, deriving distinct benefits from being close to other innovative firms.

The third point is that the financial crash and global economic crisis of 2008 catalyzed long-run pressures that had been building at the community level since the 1970s. Communities already in decline suffered deeper and longer economic downturns than metropolitan areas where superstar knowledge, technology, and service-oriented firms agglomerate. The geographic unevenness of the recovery magnified trends in inequality of wealth and income that had been decades in the making (see Rogowski and Flaherty, this volume). In this environment it was easier for populist politicians and parties to mobilize voters along anti-globalization, anti-European, or anti-immigration lines. Populism found its principal support in areas where the recovery was slower, and where economic decline had been underway for a long time.

While similar economic forces appear to drive the backlash to globalization across wealthy countries, there are important differences in the degree to which populists have captured power – as well as in the extent to which they threaten to undermine the LIO. In the final section of the paper, we argue that a portion of this variation is likely due to the institutional differences across developed democracies. As an illustration, we focus on labor market institutions and electoral rules. Variation in labor market institutions may mediate or cushion voters from the vicissitudes of globalization, dampening the popular revolt against the LIO. Electoral rules such as proportional representation influence the ability of populist parties to gain power. Due to the lack of attention given to these and other national-level political institutions in explaining the backlash, this discussion is more speculative. It is our hope that by illustrating some of the gaps in the literature, we provide a source of inspiration for future research.

The background

There are substantial economic sources of the populist backlash against economic and political integration. Regions harmed by greater exposure to the international economy, in particular to imports from China and other low wage countries, are more likely to vote for political parties and candidates hostile to globalization or European integration. This is true of Western European countries generally (Colantone and Stanig 2018b), of France specifically (Malgouyres 2017), and of the British referendum to leave the European Union (“Brexit”).¹ It is also true of analogous trends in American politics, especially in regions that have experienced job losses and reduced wages due to low-wage imports from developing countries. These regions have become more politically polarized

¹ The Brexit vote was strongly affected by underlying socio-economic characteristics of constituencies, and in particular by low income and education, high unemployment, and substantial employment in manufacturing (Colantone and Stanig 2018a, Becker, Fetzer and Novy 2017).

since 2000 (Autor et al. 2016a); their legislators have tended to vote in more protectionist directions (Feigenbaum and Hall 2015); and they were more likely to swing their votes toward Donald Trump in the 2016 presidential election (Autor et al. 2016b).

Figure 1 illustrates the geographic variation in support for the populist campaign of Donald Trump in the 2016 general election compared with Mitt Romney, who in 2012 ran as a more traditional Republican. Trump significantly outperformed Romney in the “Industrial Belt” – areas in the Midwest once known for manufacturing prowess but now often sites of abandoned factories and economic blight following decades of plant closures and manufacturing layoffs.

The political phenomenon we associate with a backlash against globalization takes different forms in different contexts. Most of the movements in question fall under the general rubric of Right-wing populism and we focus on this form, although we recognize that there are also Left-wing strains. Populists, in one way or another, question the existing multilateral institutional structure of the international economic order. Since World War Two this has involved, among other things, the delegation of some important aspects of economic policy – overseeing international monetary and financial relations, concessional lending to developing countries, the monitoring of trade disputes – to international institutions. In Europe the process has gone much further, as many more components of traditional government policy have been delegated to the institutions of the European Union. Supporters of the liberal international order typically believe in the desirability – even necessity – of multilateral agreement to allow international bodies to monitor and supervise international cooperation.

Populists contest what they see as a surrender of sovereignty to international institutions and their unelected overseers.² America’s populists have been explicit in their hostility to international

² For an excellent discussion of the history of populism, see Eichengreen (2018).

trade, investment, and finance, and in some contexts immigration as well. Donald Trump framed this in classic anti-globalist terms in an address to the United Nations General Assembly: “America is governed by Americans. We reject the ideology of globalism.... [R]esponsible nations must defend against threats to sovereignty...from global governance.” Speaking of international institutions, Trump proclaimed, “We will never surrender America’s sovereignty to an unelected, unaccountable, global bureaucracy.”³

In Europe, populist movements share a skepticism about, or hostility to, European integration, and usually to immigration. Supporters of Brexit framed their goal very explicitly as “Taking back control from Brussels.” More specifically, they argued, “EU law is supreme over UK law. This stops the British public from being able to vote out those who make our laws. Our 'Supreme Court' is the European Court of Justice. We’ve lost control of trade, human rights, and migration.”⁴ In all variants, populists are hostile to existing mainstream political institutions, parties, and politicians.

Nonetheless, questions persist about the mechanisms by which these international economic trends translate into domestic political effects. One consideration is that while trade is undoubtedly responsible for some of the downward pressure on unskilled and semi-skilled labor in the OECD, technological change is also part of the process. There have been long-standing debates on the relative importance of each factor; it is hard to imagine resolving the debates, as to some extent globalization and technological change are jointly determined and affect each other. Still, the current

³ “Remarks by President Trump to the 73rd Session of the United Nations General Assembly | New York, NY” at <https://www.whitehouse.gov/briefings-statements/remarks-president-trump-73rd-session-united-nations-general-assembly-new-york-ny/>

⁴ http://www.voteleavetakecontrol.org/briefing_control.html

state of the Economics literature allows for a substantial portion of the impact to be due to the free movement of goods and capital (Krugman 2008, Autor et al. 2013). It is not surprising that political entrepreneurs looking for a way to capture discontent focus on trade rather than technological change, for the former is a policy variable while the latter generally is not (for a related discussion, see Mansfield and Rudra, this volume).

More important for our purposes is that some studies of individual opinions, typically based on surveys, find either weak or little relationship between individual economic experiences, on the one hand, and individual political beliefs and policy preferences, on the other (Rho and Tomz 2017; Ingelhart and Norris 2018; Mutz 2018, but for a critical evaluation of Mutz see Morgan 2018). This highlights the need for a careful attempt to understand precisely how these economic trends affect political behavior.

The long-run decline in manufacturing

The first point of emphasis in explaining the backlash against globalization and the rise of populism is that the core phenomenon – the decline of manufacturing employment – has been going on for over forty years. Whether driven by technological change, by economic integration, or by other considerations, employment in manufacturing as a share of the labor force in the United States – and nearly every other rich country – has declined continually since the early 1970s, falling from 26% in 1970 to less than 10% by 2016. In the 1970s and 1980s, the international economic context was the rise of manufactured exports from low-wage developing countries such as South Korea, Taiwan, Singapore, and Mexico (Baldwin 1986). Competitive pressures on traditional low-wage manufacturing in the industrial countries had a particularly negative impact on job opportunities for less skilled workers. The result is that conditions for less skilled workers in the OECD have been difficult for decades. Figure 2 demonstrates the dramatic decline in manufacturing employment shares across advanced economies between 1970 and 2012. As we discuss in greater detail below, the specific impact of this decline on populism may depend on local labor-market and political

institutions, but the general pattern is clear: important segments of the labor force have been struggling for a long time.

The most direct effects of lost manufacturing jobs are economic. Along with rising unemployment, wages tend to decline. One reason is that manufacturing wage premiums are high: workers in the manufacturing sector earn higher wages conditional on education compared to workers in other sectors (Krueger and Summers 1988, Ebenstein et al. 2015). Furthermore, when one local plant shuts, associated businesses also suffer. As a result, local suppliers and downstream producers often experience job losses and wage pressure (Acemoglu et al. 2016). In the United States, for example, the real wages of unskilled and semi-skilled workers began stagnating and even falling (in relative and absolute terms) in the early 1970s and have remained stagnant. The full entry of China and other new manufacturing exporters such as Vietnam into the world economy after 2000 was a major shock – but it came on top of a long-standing trend that had eroded the position of many previously well-paid industrial workers in North America and Western Europe.

To examine the recent economic decline in former manufacturing hubs compared to other communities, we gather data on manufacturing employment in US counties in 1970, and changes in economic conditions between 2000 and 2015. The scatterplots in Figure 3 suggests a correlation between recent economic decline and former industrial strength. In particular, counties with higher shares of workers in manufacturing *in 1970* suffered the largest drops in manufacturing employment shares since the turn of the century (Panel A). Moreover, economic decline in these communities appears to extend beyond the manufacturing sector: former manufacturing strongholds suffered larger recent drops in labor force participation (Panel B) and slower growth in median household income (Panel C). The scatterplots indicate that recent economic distress is most pronounced in the former industrial communities of the US.

The mirror image of this trend is the increasing concentration of more successful economic activities in specific regions of the country. There are significant agglomeration effects that lead

many “superstar firms” to locate in areas close to each other (Moretti 2012). At the same time, the decline of manufacturing has been associated with a rise in service employment. In both the United States and Europe, many of the most successful firms and industries are in fact engaged in skill-intensive service activities, while it is the less skilled tasks that are sent offshore or automated. High-wage, high-skill employment is concentrated in the major cities, which have largely benefited from globalization. Figure 4 demonstrates the concentration of tradable services employment in the major European capitals; and Figure 5 illustrates a similar urban concentration of professional services employment in the United States.

Right-wing populism, like industrial decline, began long before the election of Donald Trump, the Brexit referendum, and the recent success of the German AfD. But the timing, and the form that it took, were conditioned by electoral institutions, as we discuss below. In European parliamentary elections where the electoral threshold is low, the share of votes for right-wing populist parties increased steadily since the early 1980s, rising from a low of 1% in 1982 to an historic high of 12.3% in 2016 (Heinö et al., 2017). However, in first-past-the-post electoral systems, where candidates and parties need to win the most number of votes in their respective constituencies, the backlash to industrial decline took other forms. In the United States, billionaire outsider H. Ross Perot campaigned as an economic nationalist in 1992 and won 18.9% of the popular vote, making him the most successful third-party presidential candidate since 1912, in terms of the popular vote. Yet despite winning nearly 20 million votes, Perot did not receive a single Electoral College vote, which speaks to the importance of electoral institutions in aggregating populist sentiment (see below). While a populist did not win the presidency until 2016, populism had been growing for decades in the US, as witnessed by the rising popularity of anti-globalist, far-right media personalities like Rush Limbaugh and the success of the Fox News cable channel (Groseclose and Milyo 2005).

The impact on communities

The second important feature of the economic trends of the past decades is that the impact of international economic integration – and, for that matter, of technological change – is best understood as affecting geographically specific *areas* rather than individuals. Regions, cities, and towns are economically specialized, and difficulties in their core industries have broad and deep implications for their economic and social structures. The initial direct economic impact of industrial decline puts downward pressure on wages and employment. This then leads to broader and more indirect effects: labor force participation declines, young people leave, property values decline, local tax revenue falls, and local public services deteriorate (Feler and Senses 2017).⁵ After a couple of decades the city, town, or neighborhood is reeling from waves of economic and social shocks, affecting everything from school quality to opioid addiction (Pierce and Schott 2017).

Due to the regional impact of structural economic change, we think the appropriate unit of analysis for studying populism is the community, not the individual. The localization of economic activity means that individuals within a community are linked together by way of economic spillovers. Standard trade theory usually assumes that individuals are atomistic and that their welfare depends only on their individual factor income. But when a person's welfare is tied to health of the local economy and encompasses more than just income, "community" takes on added significance as an analytical concept. Consider an employed, high-skilled homeowner in Gary, Indiana, an industrial city specializing in steel production. While this person enjoys income gains from freer trade, the local contractionary effects of trade reduces her asset holdings by lowering housing demand and thus housing values (Scheve and Slaughter 2001). Here, trade competition affects home values but this mechanism operates independently of trade's effect on labor income.

⁵ In a related vein, communities harmed by NAFTA saw an increase in military enlistment (Dean 2018).

In the previous example, a person's overall economic welfare depends on both income and asset holdings, and free trade affects these two channels differently. The same holds for the other spillovers of economic decline. For example, in communities exposed to trade competition (and technological change), the wages of those directly affected fall, but the decline in regional economic activity also leads to declines in property taxes and thus local public services (Feler and Senses 2017). Declines in school quality, policing, and other local amenities harm other people in the community, even if they are not directly employed in the declining sector. The material effects of industrial decay do not end with the direct effects on wages and employment: the spillovers to labor force participation, property values, public services, health outcomes, and drug abuse harm the wider community. The cumulative political effect of these negative spillovers is that people in struggling communities are more likely to reject the status quo and embrace populism than people in more prosperous communities.

Our concept of "community" recognizes that the direct and indirect economic effects of globalization and technological innovation are concentrated at the local level. It can be distinguished from other conceptions, such as when people are assumed to have "sociotropic" or "altruistic" preferences and thus identify with the good of their communities, rather than self-interest. When the economic health of core industries in a community generates externalities for other members of the community, there is little need to invoke these types of non-standard preferences. Individuals' economic welfare rises and falls with local economic conditions. Spatial concentration of economic activity generates positive externalities within the agglomeration; so too can economic decline disrupt agglomeration economies and harm the wider community. That is, the decline of core industries in a region is the mirror image of the positive agglomeration effects that give rise to successful spatial concentrations in the first place.

Figure 6 illustrates that the populist upsurge in the US was strongest in counties with declining economic and social conditions. Drawing on county-level data, we plot changes in Trump

two-party vote shares in 2016 (again, compared to Romney in 2012) against changes in the following three indicators: median household income, population, and mortality rates for 25-45 year olds. As shown in the top panel, Trump's populist appeal (relative to the more traditional Republican) was most resonant in counties with the weakest income growth, declining populations, and rising mortality rates. The lower panel in Figure 6 demonstrates that these relationships appear even stronger in counties in the Industrial Belt.⁶

Analyzing populism requires understanding the connections between the location of economic activities, the effects on local communities, and economic voting. The spillovers of spatial concentration are at the community level: for every new job created in a metropolitan area's productive exporting firms, five new jobs are created in that metro area, three of which are for workers who have not attended college (Moretti 2012). In metro areas, export-oriented companies drive opportunities for less-educated workers outside of their industry, raising salaries and standards of living for all. By the same token, the spillovers are all negative for dying manufacturing regions where populism finds its strongest supporters: for each manufacturing job lost to trade competition or technical change, an additional 1.6 jobs are lost outside that sector in these communities (Moretti 2012, 24). As discussed earlier, the negative spillovers of closing industrial plants have left many once prosperous manufacturing communities in ruins.

We explore the relationship between long-term, localized deindustrialization and support for Donald Trump in the 2016 election by estimating a simple regression model using county-level voting data. As the dependent variable, we again rely on the change in Republican two-party vote share between 2012 and 2016. We regress the dependent variable on the county-level declines in the

⁶ The Industrial Belt sample includes Michigan, Wisconsin, Indiana, Illinois, Ohio, and Pennsylvania.

share of manufacturing workers between 1970 and 2015, and a set of demographic and economic control variables.

The estimates indicate stronger Trump support in counties with larger declines in manufacturing employment. The relationship is displayed as a partial regression plot in Figure 7, and the full model estimates appear in the appendix. A one-standard deviation decline in the manufacturing employment share between 1970 and 2015 (equivalent to around 11 percentage points) is associated with a .5% increase in Trump vote share. All the while, we find that less populated (more rural) counties and those with older, whiter, and less educated populations were more supportive of Trump.⁷ Deindustrializing communities appeared drawn to the candidate's more populist, anti-globalization campaign.

In contrast, voters in more competitive local economies were less likely to support Trump in 2016. Figure A1 shows that higher shares of workers in business services – an industry in which the US has a strong comparative advantage and from which exports have increased (Weymouth 2017; Jensen, Quinn, Weymouth 2017) – negatively correlate with increases in Trump vote shares at the

⁷ Using trade data from Comtrade, we construct a county-level measure of the Chinese import shock following the methodology of Autor, Dorn, and Hanson (2013). Our results are unchanged when we include this variable as a control in our regression (see Table A1, column 2). That is, declining manufacturing employment shares (1970-2015) are associated with increases in support for Trump, holding the shock of Chinese imports constant. We note that the correlation coefficient corresponding to the China shock and declines in manufacturing employment (1970-2015) is .19, indicative of the fact that other factors beyond Chinese imports account for local level manufacturing job losses.

county level. That is, U.S. communities featuring more workers in comparatively advantaged industries are more likely to shun right-wing populism.

Populism has its roots in the stark geographic inequalities in prosperity and opportunity over past decades. In the United States, communities' economic prospects have diverged along a number of dimensions. Income has become progressively more unequally distributed since the early 1970s. Social mobility has also declined dramatically and is now lower than in most European countries. Perhaps just as striking is the fact – in line with the points made above – that social mobility varies dramatically across American regions: children in the prosperous Northeast and West have substantially more promising futures than children from poorer families in the Midwest and South (Chetty et al. 2014). The effects of the regional specificity of many of these trends are heightened by the fact that inter-regional mobility in the United States has declined dramatically, so that those “stuck” in declining areas find it ever more difficult to leave (Ganong and Shoag 2017).

The decline in social mobility in the hardest-hit regions, along with the decline in inter-regional mobility, help explain why regional economic fortunes have tended to diverge rather than converge. If children in declining regions only have access to poor educational systems, they cannot develop the skills that would allow them to move to more prosperous areas. And as housing prices fall in communities in decline and rise in prosperous communities, homeowners – and even renters – in struggling regions find it increasingly difficult to move to areas doing better (Ganong and Shoag 2017).

Populist sentiment in Europe exhibits similarly strong regional and community features. In Western Europe overall, Chinese import shocks are associated, at the level of electoral district, with “an increase in support for nationalist and isolationist parties... [and] an increase in support for radical-right parties” (Colantone and Stanig 2018b). Higher local unemployment leads to more votes for populist parties (Guriev 2018). District-level economic characteristics had a powerful impact on the vote on the British referendum to exit the European Union (Becker et al. 2017). In the U.K., local

susceptibility to Chinese imports – a British China shock – is strongly associated, at the level of the individual, with the emergence of authoritarian personality traits (Ballard-Rosa et al. 2017). The success of the Right-wing populist Sweden Democrats is closely related to the “local increase in the insider-outsider income gap, as well as the share of vulnerable insiders” (Dal Bó et al. 2018). These and many other studies make it clear that in Europe, too, there is a strong association between local economic distress, on the one hand, and political reactions that contribute to Right-wing populism, on the other.

While we emphasize the economic and social interdependences within communities, local cultural characteristics interact with local conditions to affect support for populism (Gidron and Hall 2019). The two main explanations for populist outcomes – one emphasizing economic anxiety, the other emphasizing white voters’ loss of status as the dominant group in society – are not mutually exclusive. For example, congressional districts with majority white populations are more likely to elect conservative Republicans in response to an increase in import competition, while trade-affected districts with non-white majority populations are more likely to elect liberal Democrats (Autor, Dorn, Hanson, and Majlesi 2018). Similarly, the impact of manufacturing employment on the 2016 Trump vote is conditional on the racial composition of the county: support for Trump is positively correlated with manufacturing (and manufacturing layoffs) in predominantly white counties and among white voters, and negatively correlated with manufacturing in ethnically diverse counties (Freund and Sidhu 2017, Baccini and Weymouth 2019). When whites and non-whites react differently to similar economic pressures, it is consistent with the argument that voters separate according to their cultural identities during hard times. We discuss the implications of this community-cultural interaction in the conclusion.

Immigration from low-income countries has also been a target of at least some of the populist movements. The association between increased immigration and anti-integrationist movements has many interpretations, both economic and non-economic. For our purposes, we are especially

interested in how high and/or accelerating levels of immigration relate to local socio-economic conditions. There is substantial evidence that local unemployment or other economic distress interacts with immigration to spur a political response (Knowles and Tropp 2018; Cerrato et al. 2018). For example, individuals economically harmed by the Great Recession increased their opposition to immigration (Goldstein and Peters 2016). County-level US election results between 1990 and 2010 also reveal a pro-Republican voting response to localized increases in low-skilled immigrants in counties with more low-skilled residents (Mayda et al. 2018). This suggests a nativist political reaction to labor market and public resource competition from immigrants, another source of support cultivated and exploited by Trump and other nationalist politicians.

Labor market distress in manufacturing communities and or other socio-economic features of local areas may amplify the political effects of immigration. For example, right-wing populists may gain support by blaming immigrants (including refugees) for undermining social safety nets in communities where economic conditions are poor or deteriorating due to deindustrialization. If economic hardship causes people to close ranks around their cultural identities, then whites may respond to economic pressure by blaming immigrants – especially if they dramatically overestimate the number of immigrants in their communities, perceive that immigrants are culturally and religiously more distinct from them, and believe that immigrants benefit disproportionately from the welfare state (Alesina, Miano, and Stantcheva 2019). While research has yet to establish whether the link between immigration and populism is due to misperceptions on the part of voters, disinformation flowing from populists to voters about the level, composition, and costs of immigration, or some combination, the link is most evident in communities that experience long-term economic decline.

The nature of these non-economic elements varies across countries. In some cases, the populist upsurge is related to a strong urban-rural divide, with rural and ex-urban areas expressing hostility to the cities, whether for their cosmopolitanism, multiculturalism, or prosperity. In other cases, populists make powerful appeals to traditional cultural values. In still others, hostility is aimed,

with different degrees of openness, at ethnic or racial minorities. Populist politicians have successfully built on economic distress to direct hostility toward existing political institutions and socio-economic and political elites. They have also used, or fanned the flames of, existing cultural, racial, or ethnic prejudices to drum up support for their invocation of traditional values against the purported adversaries. Donald Trump blamed immigrants and foreign economic competition for national economic decline, all the while explicitly linking a promised revival to a nationalist agenda that would “Make America Great Again.” He also lamented the breakdown of tradition, which fed into a nationalist-populist response in areas where people were in economic distress (Noland 2019; Hays, Lim and Spoon 2019).

Overall, the decline of traditional manufacturing in the OECD has had a powerful impact on these countries’ socio-economic realities. While there are substantial differences across countries – in line with the major social, economic, and institutional differences among them – the past four decades have not been good for communities that had previously relied upon traditional manufacturing. And the decline of these communities has had important political effects.

The impact of the crisis

Many of the trends discussed above came to a head with the global financial crisis that began late in 2007. In most countries, the pre-crisis economic expansion had dampened some of the growing discontent, although the fruits of that expansion were not evenly distributed. But the crisis had a particularly severe and long-lasting effect on the middle class and on the already-struggling regions of most countries. In the United States, it took ten years for real median household income to return to its pre-crisis levels, even as overall national income rose substantially. Median household wealth has suffered even more (Wolff 2017). In much of the depressed American industrial belt, median household income remains below its pre-crisis levels, while unemployment remains high and labor force participation has dropped dramatically.

The economic crisis that began at the end of 2007 brought forth a collection of different experiences that varied greatly across localities (Reeves and Gimpel 2012). Some localities suffered the full force of the downturn in employment, economic activity, and housing prices while others escaped with hardly any lasting impact. The pattern was not random. The crisis lingered in places where industrial decay and hardship had been going on for a long time, magnifying the spatial economic disparities between booming cities with knowledge industries and struggling communities suffering from industrial decline. Figure 8 reveals a strong correlation between the drop in manufacturing employment share between 1970 and 2015, and the average post-crisis unemployment rate (2010-2015). Industrial regions already battered by the pressures of trade and technological change experienced deeper and longer economic declines than the service economies of the major metropolitan areas. Housing prices recovered quickly in cities specializing in high-skill industries and occupations, like San Francisco, New York, and London but remained flat or declined in manufacturing areas.

We examine the lingering effect of the crisis on support for Trump by considering the post-crisis average unemployment rate. To our Trump vote share model, we introduce the average unemployment rate between 2010 and 2015. The results reported in column 3 of Table A1 show no evidence of a statistically significant relationship between post-crisis unemployment and Trump support. However, high unemployment is associated with increasing support for Trump in localities where manufacturing employment declined more precipitously between 1970 and 2015. (Appendix Figure A2 depicts the results, which appear in column 4 of Table A1.) Contrasting experiences with the crisis catalyzed populism by even more sharply demarcating areas of prosperity from areas of decline.

In Europe, the relationship between the crisis and increased populist sentiment and voting is clear. The crisis – which was much longer and more severe in Europe than in the United States – led to a massive drop in citizens’ confidence in existing political institutions, both at the national and at

the European levels. The countries hardest hit by the crisis, and the groups within countries that suffered the most, were those that saw the biggest decline in trust in government --- and, eventually, the biggest rise in protest voting for populists of the Right and Left (Foster and Frieden 2017). By the same token, regions of Great Britain and France that were harder hit by the decline in housing prices – a good proxy for local economic conditions – were more likely to vote for Brexit and the National Front, respectively (Adler and Ansell 2019).

The connection between the crisis and the rise of Right populism in the United States is not so straightforward. Certainly the Tea Party movement was a direct reaction to the Bush and Obama administrations' response to the crisis – recall that the movement began on the floor of the Chicago Mercantile Exchange with an attack on government bailouts. There is a connection between the Tea Party movement and the Trump campaign, but it is not clear-cut. Nonetheless, as we have demonstrated, the counties that swung most heavily toward Donald Trump (as compared with Mitt Romney's mainstream Republican candidacy) were largely in regions of long-standing manufacturing decline. These regions were among those hardest hit by the crisis, and those where local conditions recovered more slowly – if they recovered at all. The issue requires more research, but we believe that the crisis and its aftermath – both in the United States and in Europe – were a crucial catalyst that inflamed an already volatile public, especially in long-suffering areas of industrial decline.

The confluence of long-standing trends that left many small cities, towns, and rural areas in distress, and an economic crisis of a magnitude that had not been seen for 75 years, sparked an upsurge of anger at governments that appeared not to be able to deal effectively with either the long-term deterioration or the short-term crisis. Populist movements of various sorts started growing, reaching large proportions by 2015. Their victories in the United States and the United Kingdom in 2016, and subsequent victories or increases in influence elsewhere, appear to have ushered in an era

in which powerful opposition to globalization or European integration is likely to persist and, perhaps, determine policy in many developed countries.

Our discussion to this point has focused on the sources of voters' *demand* for change, and on the reasons this demand takes such a strong regional character. Prosperous and distressed regions – and, of course, their inhabitants – have behaved very differently in the political arena. But this political behavior is mediated through national social and political institutions which aggregate and channel regional economic and social effects into political movements and electoral outcomes. The great variety of social and political institutions across developed countries helps explain the variation in the nature of the backlash against globalization. In what follows, we analyze how this decline is reflected in different political systems, in particular with respect to the rise of anti-integrationist populism.

The supply side: compensation mechanisms and political institutions

The economic pressures associated with globalization and technological change are present across advanced economies, but right-wing populism is not evident everywhere, nor to the same degree in all places. In this section, we discuss how two “supply-side” institutions might help us understand cross-national and subnational differences in far right support: *compensation mechanisms* and *electoral institutions*.

Compensation Mechanisms. The post-war “bargain of embedded liberalism” (Ruggie 1982) recognized that mass support for globalization could be maintained by way of a government transfer system that taxed the winners from economic integration in order to fund a social safety net for the losers. That bargain started to erode in many countries with the market-oriented reforms that began in the 1980s; in Europe, the fiscal austerity that followed the sovereign debt crisis reduced the safety net even further (Foster and Frieden 2019). However, substantial variation in social and labor market policies persists across the OECD. Indeed, countries with more open economies tend to have bigger governments – an outcome that many scholars attribute to election-minded governments supplying

compensation as a compromise to maintain free trade policies (Cameron 1978, Rodrik 1998, Adserá and Boix 2002, Hays, Ehrlich, and Peinhardt 2005).

It remains an open question as to whether nations with more generous compensation mechanisms have been able to moderate the effects of economic hard times on the support for populists. For instance, it would seem straightforward that more generous *unemployment benefits* could limit the impact of economic downturns on support for populists. Even in the United States, where unemployment benefits are far less generous than in most of Europe, targeted compensation has had an effect in shielding globalization's losers and providing a bulwark against protectionism. The U.S. Trade Adjustment Assistance program (TAA) – which provides temporary income support, job retraining, and relocation assistance for workers that lose their jobs due to trade and offshoring – moderates the negative impact of globalization on support for incumbent presidents (Margalit 2011). Trade adjustment assistance also curbed protectionism among voters: in the 2016 primary and the general elections, TAA benefits were significantly associated with reduced support for the anti-globalization candidate, Donald Trump (Richie and You 2018). However, there is not enough evidence yet to confirm a strong relationship between more generous unemployment benefits, on the one hand, and reduced populist voting, on the other. As we alluded to above, the lack of evidence may be related to immigration and refugee flows, in that natives may feel that waves of migrants and refugees threaten to undermine national social policies. While the policy tools in place to shield workers from the impact of globalization and technological change were insufficient to forestall the backlash, preliminary evidence suggests that populist parties fare worse where countries spend more on social support, and where spending has not been reduced from historical levels (Foster and Frieden 2019).

Labor-market institutions may moderate the impact of economic downturns on support for populists, but the impact is more nuanced than in the case of unemployment insurance. Labor market “rigidities” – including employment protection regulations, powerful unions, and minimum wages –

hinder employers' responses to changes in business conditions, making it more onerous to hire and fire workers. The direct beneficiaries of rigid labor market rules are employed workers – insiders – whose jobs, wages, and benefits are protected from economic shocks. While this sort of labor market institution may be expected to moderate the immediate impact of a recession on support for populists, it can also contribute to long-term structural unemployment, especially among the young who have never had a chance to enjoy the protections of these institutions. More generally, labor-market rigidities create a strong “insider-outsider” dynamic, which suggests that support for populists should be highest among the outsiders – mainly temporary workers and the unemployed (Dal Bó et al. 2018).

Active labor market policies -- government programs that intervene in the labor market to help the unemployed find work -- are another form of compensation that can moderate the political response to economic pressures. These policies include retraining and relocation assistance to help the unemployed improve their skills and increase their employability. Some governments also provide short-term employment subsidies that directly create jobs and allow unemployed workers to build up work experience and prevent skill atrophy. In contrast to rigid labor market institutions, active labor market policies benefit unemployed outsiders, which has been shown to increase support for economic integration (Hays, Ehrlich, and Peinhardt 2005). Unlike well-protected insiders with little risk of being unemployed, these programs directly benefit jobless workers by giving them access to the labor market (Rueda 2007). In addition, individuals are more positive about globalization if welfare state generosity is proxied using government spending on active labor market programs (Schaffer and Spilker 2017).

Evidence on the impact of compensation mechanisms also comes from instances in which they were rolled back, creating a new class of unprotected workers. Areas of the United Kingdom more affected by austerity measures were more likely to vote for the United Kingdom Independence

Party and for Brexit (Fetzer 2018). Similarly, a *reduction* in social spending has been associated with an increase in populist voting across 17 European countries since 1990 (Foster and Frieden 2019).⁸ In Sweden, for example, the Center-Right coalition government that was elected in 2005 implemented a six-year program of social-insurance austerity that triggered a sharp increase in inequality and sparked a populist backlash. Swedes that experienced a relative income decline and higher job insecurity due to these reforms are over-represented among the politicians and voters of the radical-right Swedish Democrats, compared to the population and other political parties (Dal Bó et al 2018). The recent problems of embedded liberalism in Europe and at its Scandinavian core reinforce the sense that the maintenance of the LIO may require redistributive compensation.

Inasmuch as compensation was originally designed to protect citizens from the vagaries of the global economy in return for political support for economic integration, it remains puzzling that mainstream political parties failed to extend such protections as they systematically dismantled barriers to trade and capital flows. Well before Donald Trump captured the Republican Party, critics argued that the U.S. trade adjustment assistance program was an inadequate barrier against the rise of protectionism as globalization deepened (e.g., Rodrik 1998, Scheve and Slaughter 2007). As Edward Alden documents in his book *Failure to Adjust*, a 1971 memo by Nixon Administration aide Pete Peterson advocated an ambitious set of adjustment assistance policies to “facilitate the processes of economic and social change brought about by foreign competition” (Alden 2016, location 405). Peterson warned:

⁸ Foster and Frieden (2019) find evidence that self-imposed austerity after the European sovereign debt crisis contributed to populism – which circles back to our point that financial crises serve as catalysts for populism.

A program to build on America's strengths by enhancing its international competitiveness cannot be indifferent to the fate of those industries, and especially those groups of workers, which are not meeting the demands of a truly competitive world economy. It is unreasonable to say that a liberal trade policy is in the interest of the entire country and then allow particular industries, workers, and communities to pay the whole price. (Alden, Location 405.)

Peterson's advice was, of course, largely ignored. And well before the UK Independence Party (UKIP) transformed party politics in Britain by pushing the Conservatives toward economic nationalism, skeptics were warning about inadequate social protections for workers and communities (e.g., Hayes 2009). The populist threat to the LIO cannot be fully comprehended without understanding why compensation has failed to keep pace with the deepening of globalization. The answer may have to do with electoral institutions.

Electoral institutions are clearly part of the story of the differential rise of populism, but their role is also complex. Throughout the OECD, political life has been dominated by political parties that have, broadly speaking, accepted the desirability of the LIO. But this centrist consensus masked the gradual emergence of political dissatisfaction. Today, political institutions across the OECD are in crisis precisely because dominant parties and politicians ignored the socio-economic trends that had been fracturing their societies for decades. There were clear warning signs. In the 1990s in the United States, Ross Perot and Pat Buchanan garnered millions of votes as political outsiders campaigning on economic nationalism. In Europe, right-wing and Euroskeptic parties have long been a feature of political life, but mainstream parties have always shunted them to the margins. In regions of Europe more exposed to globalization, centrist parties have been losing votes to extremist parties for more than a quarter of a century but did little to stop the bleeding (Milner 2019).

Electoral institutions help explain the nature of political competition and therefore the nature of parties' responses to economic pressures such as industrial decline. Where first-past-the-post

plurality systems are in place, politics has been dominated by two major parties or blocs (Duverger 1954). In such political systems, those who feel unrepresented by the dominant parties have only two choices: they can vote for new political parties that challenge the mainstream, or for insurgent candidates within the existing parties. France's experience with the National Front seems closest to the former pattern; the US trajectories of the Sanders and Trump candidacies conform to the latter pattern. The United Kingdom experienced a similar phenomenon: given general agreement between the bulk of both major parties, disgruntled politicians and voters found a way to reject existing trends via Brexit. When dissatisfied voters are given few options they like by the two dominant parties, they can react either by deserting traditional parties or voting to fundamentally transform them. On the Left, Syriza in Greece and Podemos in Spain would appear to fit into the category of creating a new force in what had been a largely two-party (or two-bloc) system.

Proportional representation (PR) systems tend to produce multiple parties, and are more open to new populist parties, as entry into the legislature is easier. This may defuse some of the populist sentiment, but if they gain enough strength, these parties can be essential to form a government. In any event, the nature of the national political system will surely affect the form a populist backlash might take.

The aggregation of economic preferences depends on electoral rules and institutions, but scholarship largely ignored political geography in the run-up to populism (Rickard 2018 is an important exception). Politicians, by contrast, have been keenly aware of the interplay of economic and political geography. Consider the United States, where manufacturing decline is concentrated in the industrial heartland, centered on the Great Lakes and the Ohio River valley. The political importance of this region is magnified in national – especially presidential – elections because the country's two major political parties hotly contest the swing states in the Industrial Belt. Although the industrial Midwest has been typically a Republican stronghold, the big cities were more commonly Democratic, and elections in such states as Pennsylvania, Ohio, Michigan, Illinois, and

Wisconsin have since the 1970s often been fiercely contested by the two parties. This has made these swing states central to the politics of globalization. To win a presidential election, a candidate has to take the bulk of the swing states in the Industrial Belt. This has given anti-globalization communities in the Industrial Belt an outsized role in national elections, as Donald Trump demonstrated in 2016.

The economic pressures of globalization and automation are ubiquitous across the OECD, but Right-wing populism varies in degree as well as in kind. Populist parties of the Right have seen strong growth in Eastern Europe and some Nordic countries but have barely registered on the Iberian Peninsula. National-level differences in social and political institutions help explain this variation, but their impact needs more research. The ability of compensation mechanisms and active labor market policies to mitigate support for extremism may be conditional on immigration and refugee flows. Rigid labor market institutions may cushion insiders temporarily from economic pressures but the increase in long-term unemployment may lead outsiders to vote for populists. A focus on electoral institutions would lead us to expect that people would not waste their votes on right-wing populist parties in majoritarian systems, but populists usurped the mainstream center-right party in the US and circumvented it by referendum in the UK.

Despite differences in its timing or form, the populist backlash has run roughshod over existing political institutions. The traditional party systems of France and Italy are gone; those of Germany and Spain are in big trouble; in the big two-party systems, the US and the UK, the backlash has torn both parties apart. Through it all, it is unclear why centrist political parties failed to respond to the underlying economic and political trends, allowing populists (both Right and Left, but mostly Right) to step into the vacuum.

It may be that supporters of the liberal international order will be able to regroup and organize themselves to confront the populist assault on globalization and European integration. There are powerful interests with a great deal at stake in defending the contemporary economic system. These include the major international banks and non-financial corporations that tend to support both

economic integration and the basic principles underpinning multilateral international institutions. Important segments of the population of the advanced industrial countries continue to support economic and political integration – especially those high-skilled and high-education individuals who have benefited from the process. As we have pointed out, most countries exhibit striking geographical differences, with clear distinctions between the prosperous cities and regions, on the one hand, and the struggling distressed area, on the other. The prosperous regions continue to dominate politics and policy in many countries.

Nonetheless, there are very real threats to the international economic order as currently constituted, and the opponents to these threats appear weak in many countries – and especially in the United States. The disarray in which most parties and party systems find themselves demonstrate the difficulty that mainstream politicians have had providing an alternative to populism. In many cases, mainstream parties have moved in the direction of populist policies in an attempt to recoup some of their prior political losses. In the United States, for example, the Democratic Party’s attitude toward the Trump Administration’s rhetoric or policies toward international trade has largely been to accuse it of not being protectionist enough. Indeed, Chuck Schumer, the Democrats’ leader in the Senate, has said that “Trump bent to China,” and that “he has sold out” with a “weak, feckless...trade deal.”⁹ In this context, it is easy to believe that little stands in the way of a continued trend in American economic policy toward greater hostility to international trade, investment, and finance.

⁹ <https://www.democrats.senate.gov/newsroom/press-releases/schumer-statement-on-reports-president-trump-signed-off-on-weak-phase-one-trade-deal-with-china>, and

<https://www.democrats.senate.gov/news/press-releases/schumer-if-president-trump-knew-what-was-in-weak-phase-one-us-china-trade-agreement-he-should-throw-it-in-the-garbage-and-take-china-back-to-the-negotiating-table>

While it is possible that the LIO may limp along in the absence of US participation and leadership – as with the rebranded Comprehensive and Progressive Agreement for Trans-Pacific Partnership, and the WTO Appellate Body workaround agreement formalized by the EU and 15 other WTO members in March 2020 – the LIO without the US will surely mean a rollback of global economic integration.

Conclusion

Understanding the sources of the upsurge in populist hostility toward economic and political integration in Europe and the United States is arguably the most important task facing contemporary social scientists. The threat to the LIO is real. In this paper, we mapped a path forward that emphasizes three points. First, the distributional effects of globalization, and of the structural decline of the manufacturing sector, have been at work for a long time in the OECD. While the entry of China into the world economy exacerbated ongoing pressures on lower-skilled, less-educated industrial workers, those pressures have existed since the 1970s. Second, the appropriate unit of analysis to study populism is the community, not the individual. This is because economic shocks have strong local spillovers. In places where manufacturing is in secular decline, industrial workers obviously are harmed, but so are other people that live near the shuttered factories: local businesses of all kinds suffer, young people often leave or turn to drugs, real estate values plummet, and social services decline. Third, the global crisis of 2008-09 compounded the pressures of industrial decline and catalyzed populism in the OECD. The costs of the crisis fell most heavily on the places and the people that were already under duress – industrial communities and middle-class incomes – fueling populist anger toward elites and resentment toward the status quo. In addition to these three main points, we also provided conjectures about how domestic compensation mechanisms and political institutions may affect the level and the form of populism.

Future research on populism has much to analyze. We need to know more about how long-run patterns of localized economic prosperity and decline affect political behavior, such as support for populism. Scholars have examined the direct impact of trade and technological change on industrial workers and communities, but it is clear that these effects resonate well beyond firms and workers in the manufacturing sector. New research should focus on how entire communities are affected by economic change, not just specific individuals, occupations, industries, or factors of production. It should also explore how the indirect effects of manufacturing decline affect local turnout and voting behavior, and through which channels: employment, real estate prices, local public services, disability, opioid use, or mortality? We also need more and better research about the conditioning effects of cultural identities. Even though combining local economic hardship with identity politics is complicated, this is the research frontier. A crucial question is why whites and non-whites respond differently to manufacturing decline in their communities. Economic geography might again help explain the difference: if non-white manufacturing workers are more likely to live in economically-robust cities like New York and Los Angeles, they might be more likely to find reemployment in a dynamic sector compared to white manufacturing workers in the industrial heartland. But cities are also ideologically specialized, with large majorities of left-wing voters, and this might suggest a political geography explanation: parties on the left may be structurally incapable of fielding nativist candidates due to their racially diverse urban constituencies (Rodden 2019).

Our understanding of the broad and deep impact of the Global Financial Crisis is similarly incomplete, although it is clear that in most cases already declining industrial communities suffered longer and more deeply from the crisis than booming metro areas. There are differences in the nature of the populist upsurge among developed – and developing – countries, much of which is undoubtedly driven by differences in the labor market and other social institutions of these societies, as well as differences in their electoral institutions. All of this calls out for substantial further research.

Other important unresolved questions have to do with the failures of mainstream political parties and political elites to anticipate the backlash and take steps to address it before populists overwhelmed them. No one should be surprised that there has been a backlash against globalization, given the scale of disruption that has resulted from more interconnected economies. What is surprising is that little was done to temper it. Why didn't existing parties, or parts of them, moderate their support for globalization or the EU, or combine such support with the expansion of compensation? Why did the challenges largely come from outside existing party systems rather than from within? Why did the new challengers adopt such a powerfully populist, anti-elite (and demagogic) message? In short, why did political institutions in advanced democracies fail to represent the people and the communities that were left behind by globalization and skill-biased technological change?

Populist movements, parties, and governments around the world have called into question the structure of the contemporary international economy. Whatever one's views on their goals and methods, today's populist upsurge represents a serious internal opposition to the established socio-economic and political order. A full analysis of the bases of support of this upsurge, and of the way it navigates existing political systems, is essential to understand populism's challenge to the reigning liberal international economic order – and, potentially, to address that challenge.

We close with the policy implications of our analysis. We have argued that the populist threat to the LIO has its base in the long-run decline of manufacturing *communities*. It follows that policies to ameliorate populism and increase support for international cooperation should target communities, as opposed to individuals, and extend beyond existing policies, such as the Trade Adjustment Assistance program, that target directly affected workers. For most of the 20th century, the forces of convergence worked to eliminate geographic differences in incomes, employment, and economic activity, rendering place-based policies moot. But economic convergence across regions has slowed greatly in recent decades, and rising inequality – and the populist political backlash it has engendered

– has led experts to embrace “place-based” policies that bolster economic and social conditions in declining areas (Austin, Glaeser and Summers 2018). In the presence of persistent geographical disparities in economic performance, place-based policies have the potential to affect the location of economic activity, wages, employment, and industrial mix of communities. Well-designed policies, such as spatially targeted employment credits, public investments in agglomeration-intensive infrastructure and higher education (Shambaugh and Nunn 2018), may be able to address the geographic differences in economic performance that have given rise to populism.

References

- Acemoglu, Daron, et al. "Import Competition and the Great US Employment Sag of the 2000s." *Journal of Labor Economics* 34.S1 (2016): S141-S198.
- David Adler & Ben Ansell. 2019. "Housing and Populism." *West European Politics*, DOI: 10.1080/01402382.2019.1615322 (published online June 2019).
- Adserá, Alicia and Carles Boix. 2002. "Trade, Democracy, and the Size of the Public Sector: The Political Underpinnings of Openness." *International Organization* 56 (2):229-62.
- Alesina, Alberto, Armando Miano, and Stefanie Stantcheva. 2019. "Immigration and Redistribution." *NBER Working Paper No. 24733*.
- Alden, Edward. 2016. *Failure to Adjust*. Rowman & Littlefield Publishers. Kindle Edition.
- Austin, Benjamin, Edward Glaeser, and Lawrence Summers. 2018. "Saving the Heartland: Place-Based Policies in 21st Century America." *Brookings Papers on Economic Activity* (Spring):1-96.
- Autor, David H., David Dorn, and Gordon H. Hanson. 2013. "The China Syndrome: Local Labor Market Effects of Import Competition in the United States." *American Economic Review* 103(6): 2121-2168.
- Autor, David, David Dorn, Gordon Hanson, and Kaveh Majlesi. 2016a. "Importing Political Polarization? The Electoral Consequences of Rising Trade Exposure." *NBER Working Paper No. 22637*.
- Autor, David, David Dorn, Gordon Hanson, and Kaveh Majlesi. 2016b. "A Note on the Effect of Rising Trade Exposure on the 2016 Presidential Election." *MIT Working Paper*.
- Baccini, Leonardo and Stephen Weymouth 2019. "Gone for Good: Deindustrialization, White Voter Backlash, and U.S. Presidential Voting." Mimeo, Georgetown University.
- Baldwin, Robert E. "The New Protectionism: A Response to Shifts in National Economic Power," in *The New Protectionist Threat to World Welfare*, ed. by Dominick Salvatore, North-Holland, 1986.
- Ballard-Rosa, Cameron, Mashail Malik, Stephanie Rickard, and Kenneth Scheve. 2017. "The Economic Origins of Authoritarian Values: Evidence from Local Trade Shocks in the United Kingdom." Working paper (October).
- Becker, Sascha, Thiemo Fetzer, and Dennis Novy. 2017. Who voted for Brexit? A Comprehensive District-Level Analysis. *Economic Policy* 32, 92 (October): 601–650.
- Cameron, David. 1978. "The Expansion of the Public Economy: A Comparative Analysis." *American Political Science Review* 72 (4): 1243-1261.

- Cerrato, Andrea, Federico Maria Ferrara, and Francesco Ruggieri. 2018. "Why Does Import Competition Favor Republicans? Localized Trade Shocks, Voting Behavior, and Scapegoating in the U.S." Working paper (March).
- Chetty, R., N. Hendren, P. Kline, and E. Saez. 2014. "Where Is the Land of Opportunity? The Geography of Intergenerational Mobility in the United States." *The Quarterly Journal of Economics* 129, 4: 1553-1623.
- Colantone, Italo and Piero Stanig. 2018a. "Global Competition and Brexit." *American Political Science Review* 112, 2 (May): 201-218.
- _____. 2018b. "The Trade Origins of Economic Nationalism: Import Competition and Voting Behavior in Western Europe." *American Journal of Political Science* 62, 4 (October): 936-953.
- Dal Bó, Ernesto, Frederico Finan, Olle Folke, Torsten Persson, and Johanna Rickne. 2018. "Economic Losers and Political Winners: Sweden's Radical Right." Working paper (August).
- Dean, Adam. 2018. "NAFTA's Army: Free Trade and U.S. Military Enlistment." *International Studies Quarterly*, 62:4 (December): 845-856.
- Duverger, Maurice. 1954. *Political Parties: Their Organization and Activity in the Modern State*. New York: Wiley
- Ebenstein, Avraham, Ann Harrison, and Margaret McMillan. 2015. "Why are American Workers getting Poorer? China, Trade and Offshoring." *NBER Working Paper No. 21027*.
- Eichengreen, Barry. 2018. *The Populist Temptation*. Oxford University Press.
- Feigenbaum, James and Andrew Hall. 2015. "How Legislators Respond to Localized Economic Shocks: Evidence from Chinese Import Competition." *The Journal of Politics* 77 (4): 1012-1030.
- Foster, Chase and Jeffrey Frieden. 2019. "Compensation, Austerity, and Populism: Social Spending and Voting in 17 Western European Countries." Working Paper, 6 December 2019.
- Foster, Chase and Jeffrey Frieden. 2017. "Crisis of Trust: Socio-Economic Determinants of Europeans' Confidence in Government." *European Union Politics* 18, 4 (December): 511-535.
- Gidron, Noam and Peter A. Hall. 2019. "Populism as a Problem of Social Integration." Forthcoming, *Comparative Political Studies*.
- Gilligan, Michael J. 1997. *Empowering Exporters: Reciprocity, Delegation, and Collective Action in American Trade Policy*. University of Michigan Press.
- Golder, Matt. 2016. "Far Right Parties in Europe." *Annual Review of Political Science* 19 (1): 477-497.
- Groseclose, Tim and Jeffrey Milyo. 2005. "A Measure of Media Bias." *The Quarterly Journal of Economics* 120, 4 (November): 1191-1237.

- Feler, Leo, and Mine Z. Senses. 2017. "Trade Shocks and the Provision of Local Public Goods." *American Economic Journal: Economic Policy* 9 (4): 101-43.
- Fetzer, Thiemo. 2018. "Did Austerity Cause Brexit?" *CESifo Working Paper No. 7159*, Center for Economic Studies and Ifo Institute (CESifo), Munich.
- Freund, Caroline, and Dario Sidhu. 2017. "Manufacturing and the 2016 Election: An Analysis of US Presidential Election Data." *Peterson Institute for International Economics Working Paper No. 17-7*.
- Ganong, Peter and Daniel Shoag. 2017. "Why Has Regional Income Convergence in the U.S. Declined?" *Journal of Urban Economics* 102:76-90.
- Guriev, Sergei. 2018. "Economic Drivers of Populism." *AEA Papers and Proceedings* 108: 200-203.
- Hays, Jude C., Junghyun Lim, and Jae-Jae Spoon. 2019. "The Path from Trade to Right-wing Populism in Europe." *Electoral Studies* 60 (August): 102038.
- Hays, Jude C. 2009. *Globalization and the New Politics of Embedded Liberalism*. Oxford University Press.
- Hays Jude C., Sean D. Ehrlich, and Clint Peinhardt. 2005. "Government Spending and Public Support for Trade in the OECD: An Empirical Test of the Embedded Liberalism Thesis." *International Organization* 59, 2 (Spring): 473-494.
- Heinö, Andreas J., Giovanni Caccavello, and Ceciclia Sandell. 2017. "Authoritarian Populism Index 2017." <http://www.epicenternetwork.eu/wpcontent/uploads/2017/07/TIMBRO-Authoritarian-Populism-Index-2017-Briefing.pdf>
- Inglehart, Ronald and Pippa Norris. 2018. *Cultural Backlash: Trump, Brexit and the Rise of Authoritarianism-Populism*. Cambridge: Cambridge University Press.
- Jensen, J. Bradford, Dennis Quinn, and Stephen Weymouth. 2017. "Winners and Losers in International Trade: The Effects on U.S. Presidential Voting." *International Organization* 71, 3 (Summer): 423-457.
- Knowles, Eric and Linda Tropp. 2018. "The Racial and Economic Context of Trump Support: Evidence for Threat, Identity, and Contact Effects in the 2016 Presidential Election." *Social Psychological and Personality Science* 9, (3): 275-284.
- Krueger, Alan B., and Lawrence H. Summers. 1988. "Efficiency Wages and the Inter-Industry Wage Structure." *Econometrica: Journal of the Econometric Society* 56, 2 (March): 259-293.
- Krugman, Paul. 2008. "Trade and Wages, Reconsidered." *Brookings Papers on Economic Activity* 1 (Spring): 103-154.
- Malgouyres, Clément. 2017. "Trade Shocks and Far-Right Voting: Evidence from French Presidential Elections." Working paper.

- Margalit, Yotam. 2011. "Costly Jobs: Trade-related Layoffs, Government Compensation, and Voting in U.S. Elections." *American Political Science Review* 105, 1 (February):166-188.
- Milner, Helen V. 2019. "Voting for Populism in Europe: Globalization, Technological Change, and the Extreme Right." Working Paper.
- Moretti, Enrico. *The New Geography of Jobs*. New York: Houghton Mifflin Harcourt, 2012.
- Morgan, Stephen. 2018 "Status Threat, Material Interests, and the 2016 Presidential Vote." *Socius* (January). <https://doi.org/10.1177/2378023118788217>
- Mutz, Diana C. 2018. "Status Threat, not Economic Hardship, Explains the 2016 Presidential Vote." *Proceedings of the National Academy of Sciences* 115 (19): E4330-E4339.
- Noland, Marcus. 2019 "Protectionism Under Trump: The China Shock, Deplorables, and the First White President." Working paper (March).
- Pierce, Justin R., and Peter K. Schott 2016. "Trade Liberalization and Mortality: Evidence from U.S. Counties," Finance and Economics Discussion Series 2016-094. Washington: Board of Governors of the Federal Reserve System, <https://doi.org/10.17016/FEDS.2016.094>.
- Reeves, Andrew and James G. Gimpel. 2012. "Ecologies of Unease: Geographic Context and National Economic Evaluations." *Political Behavior* 34 (3):507-534.
- Rho, S. and Tomz, M., 2017. Why don't Trade Preferences Reflect Economic Self-Interest? *International Organization* 71(1): 85-108.
- Rickard, Stephanie. 2018. *Spending to Win: Political Institutions, Economic Geography, and Government Subsidies*. Cambridge: Cambridge University Press.
- Ritchie Melinda N. and Hye Young You. 2018. "Trump and Trade: Protectionist Politics and Redistributive Policy." Working Paper.
- Rodrik, Dani. 1998. "Why Do More Open Economies Have Bigger Governments?" *Journal of Political Economy* 106 (5): 997-1032.
- Rodden, Jonathan A. 2019. *Why Cities Lose: The Deep Roots of the Urban-Rural Political Divide*. New York: Basic Books.
- Rogowski, Ronald and Thomas Flaherty. 2020. "Rising Inequality as a Threat to the Liberal International Order.
- Rosendorff, B. Peter, and Helen V. Milner. 2001. "The Optimal Design of International Trade Institutions: Uncertainty and Escape." *International Organization* 55 (4): 829-857.
- Rueda, David. 2007. *Social Democracy Inside Out. Partisanship and Labour Market Policy in Industrialized Democracies*. Oxford: Oxford University Press.

Ruggie, John Gerard. 1982. "International Regimes, Transactions, and Change: Embedded Liberalism in the Postwar Economic Order." *International Organization* 36 (2): 195-231.

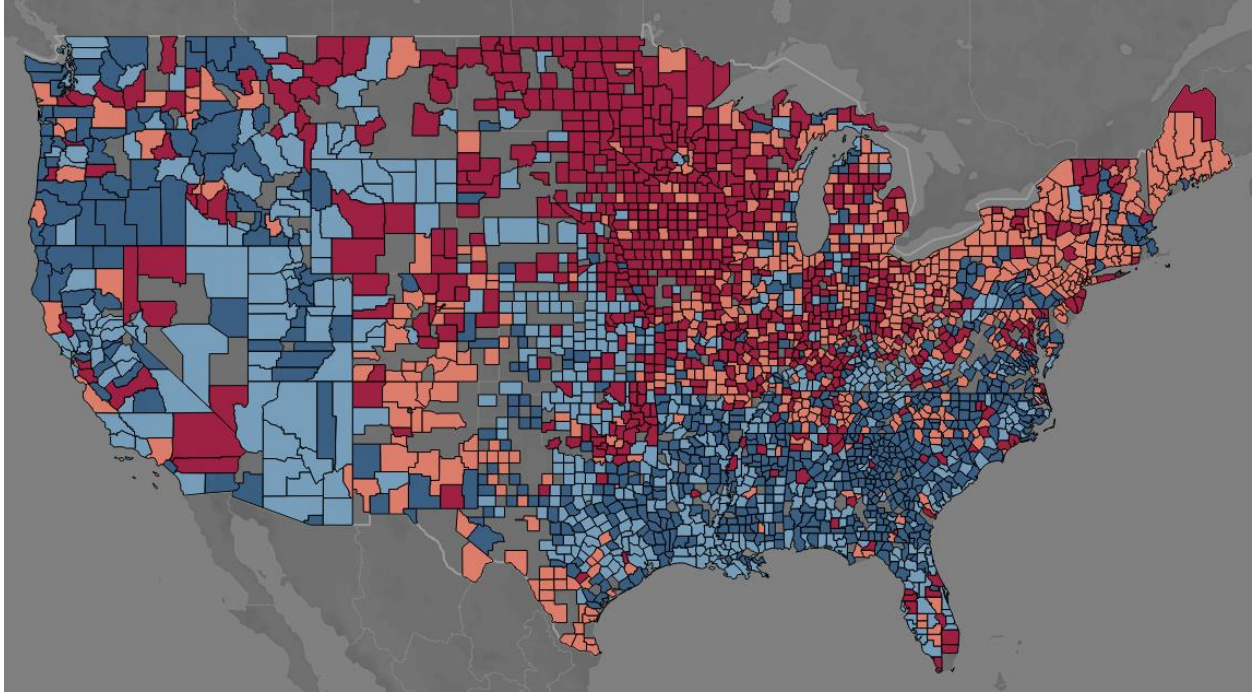
Shambaugh, Jay and Ryan Nunn, eds. 2018. "Place-Based Policies for Shared Economic Growth." *Brookings Institution Report* (September): 1-215.

Weymouth, Stephen. 2017. "Service Firms in the Politics of US Trade Policy." *International Studies Quarterly* 61(4): 935-947.

Wolff, Edward N. 2017 "Household Wealth Trends in the United States, 1962 to 2016: Has Middle Class Wealth Recovered?" *NBER Working Paper No. 24085*

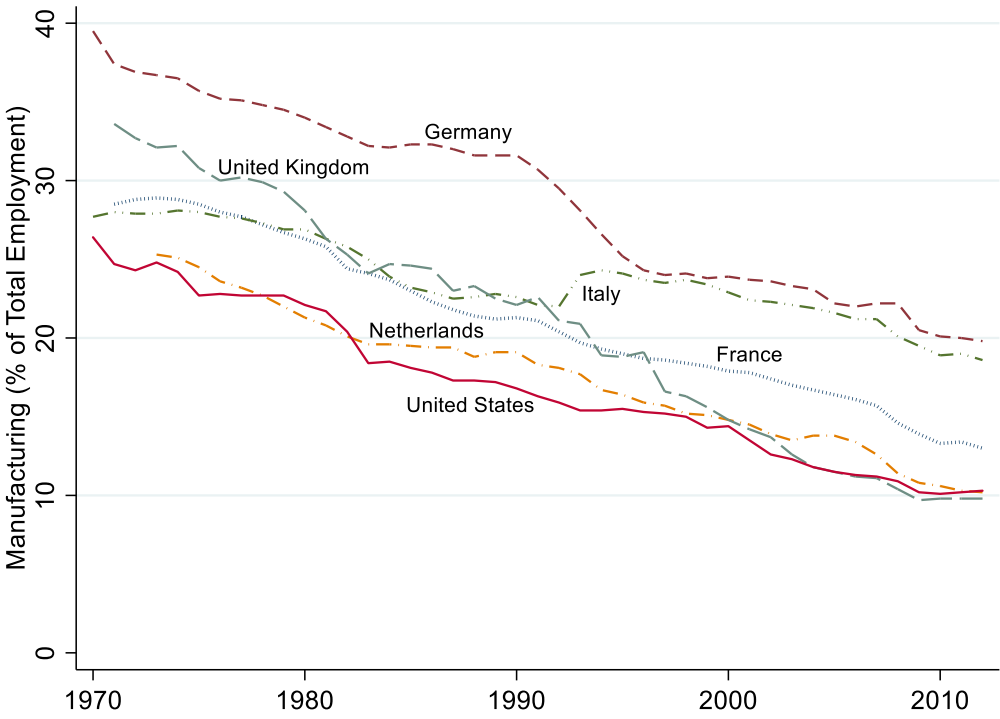
Figures

Figure 1. Manufacturing Decline and Voting for Trump in the 2016 US Presidential Election



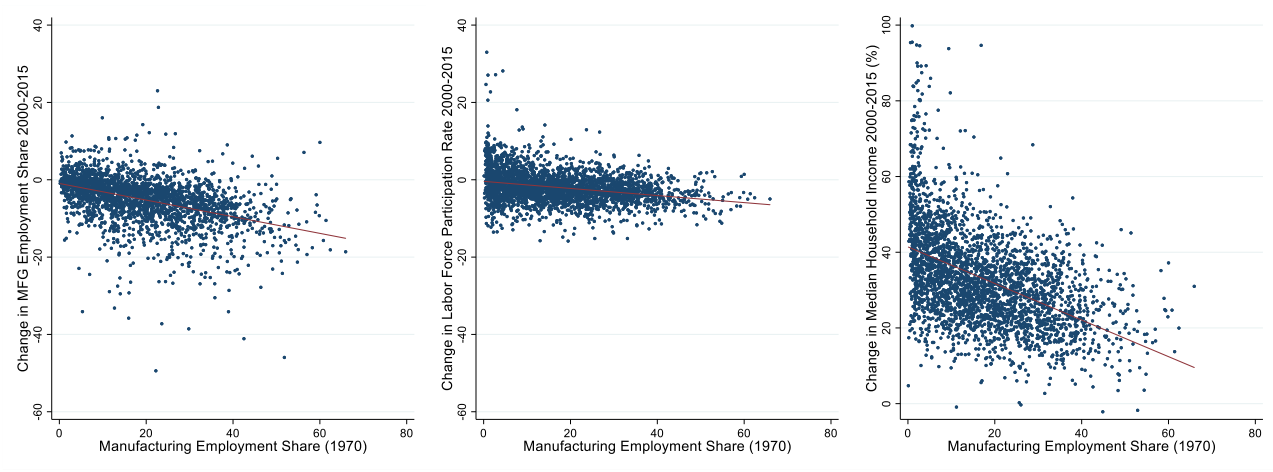
Note: The map presents the result of our county-level statistical analysis of voting and manufacturing job loss that helps illustrate the importance of manufacturing decline to the election of Donald Trump. Manufacturing job losses are measured as drops in manufacturing employment shares between 1970 and 2015. The counties that are colored **red** represent those in which there was a bigger than median-value shift in both votes for Donald Trump in 2016 from those in 2012 for Mitt Romney, and in the loss of manufacturing jobs. The counties colored **dark blue** had the opposite profile, smaller-than-median shifts in voters towards Trump and smaller than median losses in manufacturing jobs. The counties colored **pink** had larger than median shifts in voting for Trump and smaller than median losses in manufacturing, while the counties colored **light blue** had smaller than median shifts in voting for Trump and larger than median shifts in manufacturing job losses. (The counties colored **gray** were those for which we did not have sufficient data to conduct this analysis.)

Figure 2. Share of Manufacturing in Total Employment, 1970-2012.



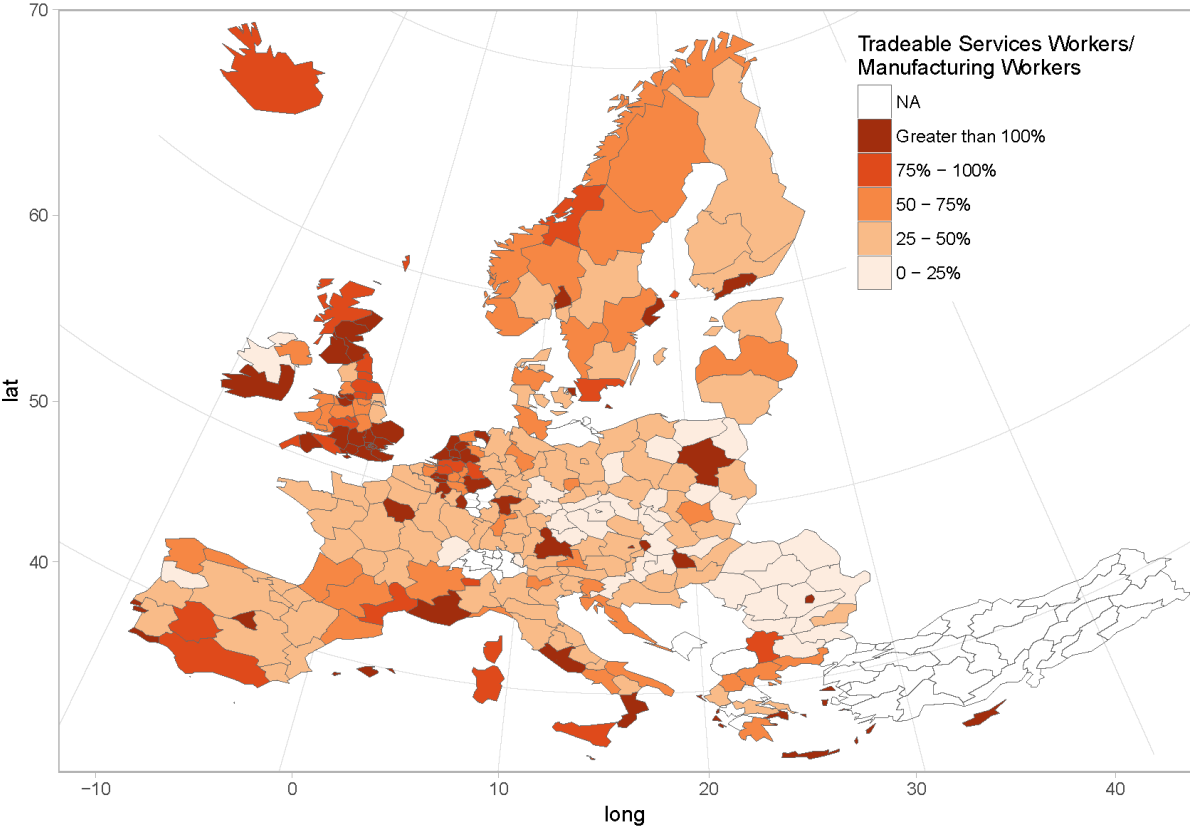
Note: The data are from the U.S. Bureau of Labor Statistics, International Labor Comparisons Program.

Figure 3. The Decline of US Manufacturing Communities.



Note: The dots represent US counties. Manufacturing employment data come from the US Bureau of Economic Analysis. Labor force participation is estimated as total employment data (from the US Bureau of Labor Statistics) divided by population (from NBER and the US Census). Median household income statistics are from the US Census Small Area Income and Poverty Estimates Program.

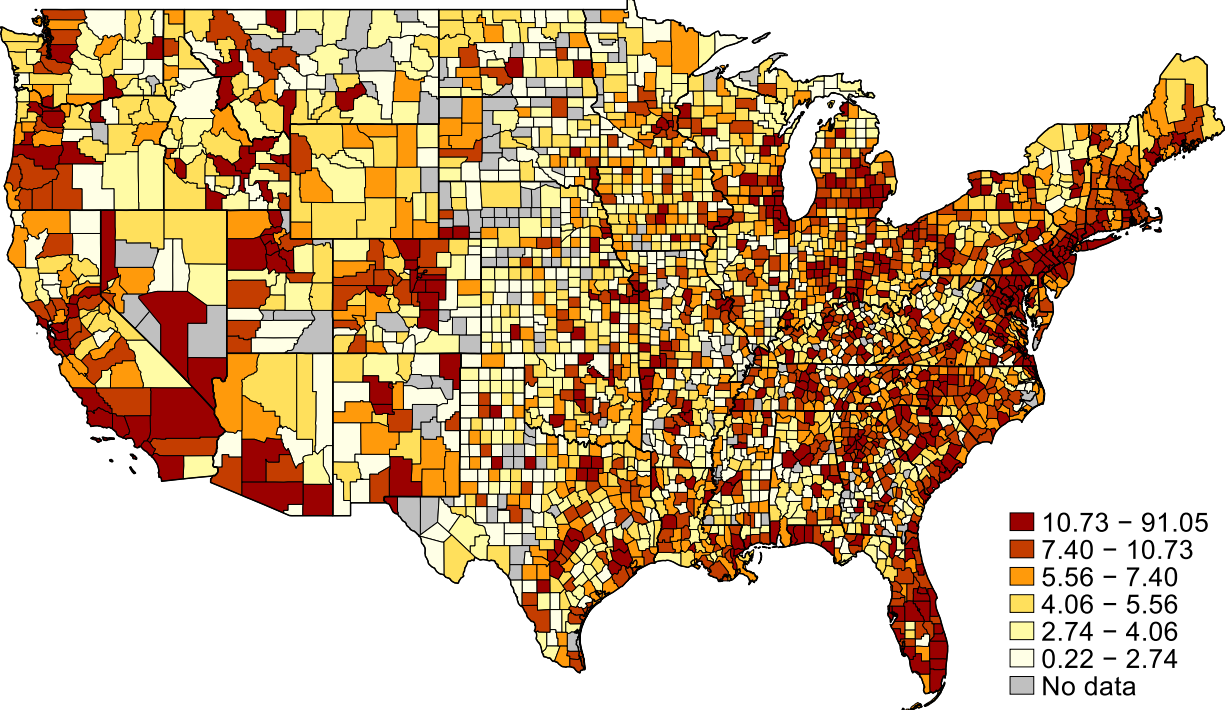
Figure 4. The Urban Concentration of Tradable Services in Europe.



(C) EuroGeographics for the administrative boundaries
Map produced in R using the Eurostat package <github.com/ropengov/eurostat/>

Note: The map shows the number of workers in tradable services relative to the number of workers in manufacturing. Tradable services are defined as Information and Communication Services along with Professional, Scientific and Technical Services. Source: Eurostat data from 2015.

Figure 5. The Urban Concentration of Tradable Services Employment in the US.



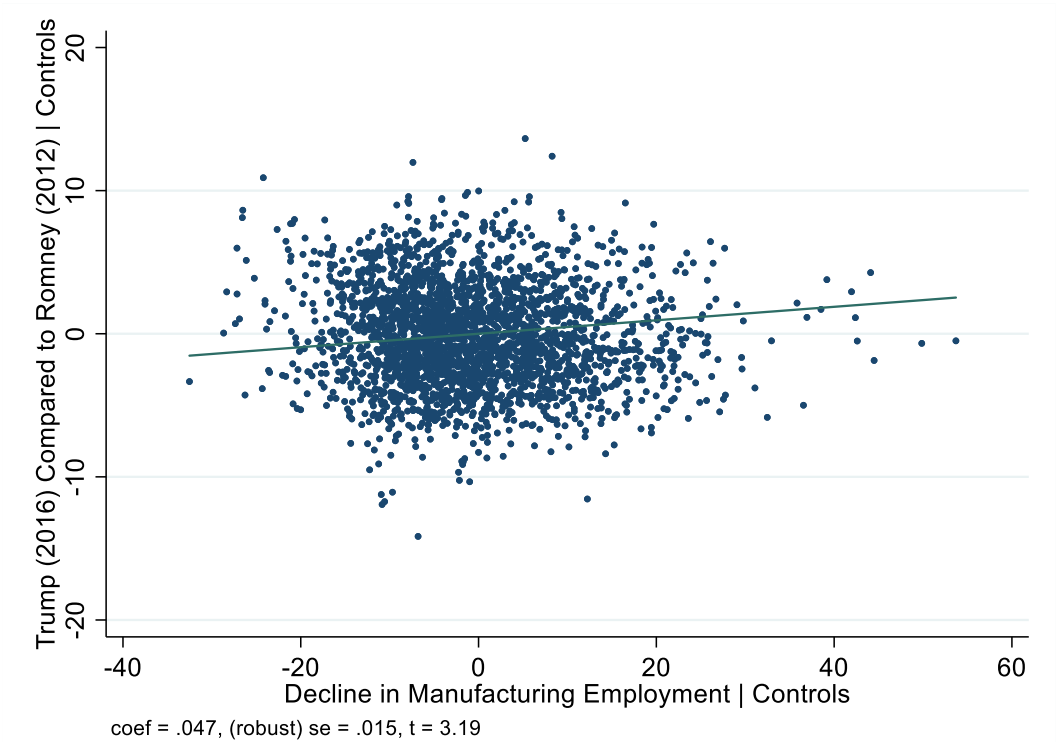
Note: The map shows employment in business services as a share of total employment. The 2015 county-level labor shares come from the US Bureau of Labor Statistics.

Figure 6. Correlates of Voting for Trump in 2016 Compared to Romney in 2012



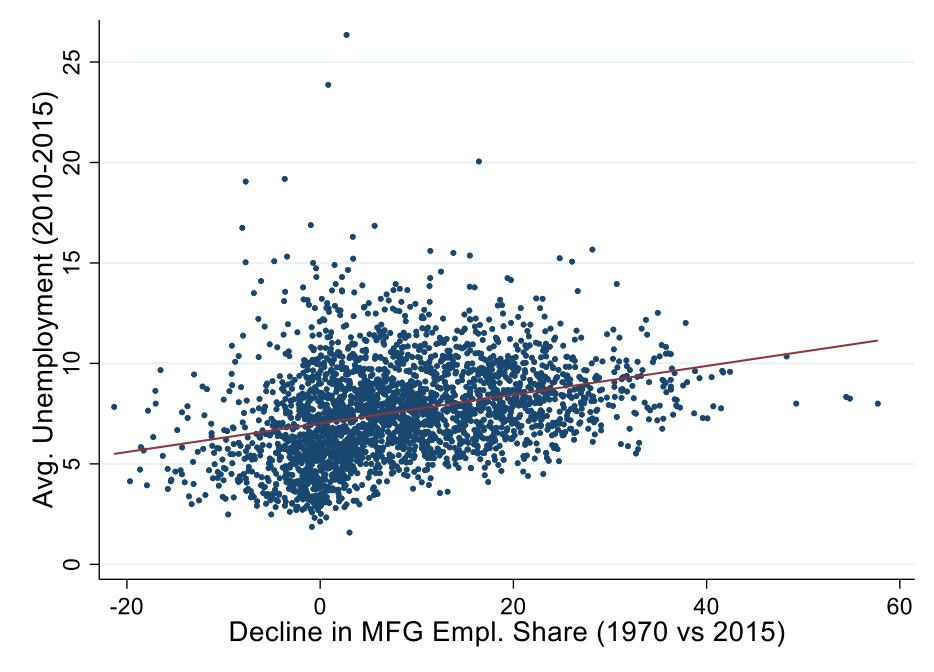
Note: The y-axis is the difference between Trump’s two-party vote share in 2016 and Romney’s two-party vote share in 2012, measured at the county level. The top panel includes all counties; the lower panel includes Michigan, Wisconsin, Indiana, Illinois, Ohio, and Pennsylvania. The county-level election data are from Leip (2018). Changes in population and median income are from the US Census. The mortality risk data are from the US Center for Disease Control.

Figure 7. Deindustrialization and Support for Trump in the 2016 US Presidential Election (county-level regression estimates)



Note: This partial regression plot (also known as an added variable plot) demonstrates the relationship between Trump support and the decline in manufacturing employment shares (1970-2015), after controlling for demographic and economic variables. Declines are computed such that positive values indicate a smaller share of workers employed in the manufacturing sector in 2015 compared to 1970. All variables are measured at the county-level. The full model estimates appear in Appendix Table A1, column 1.

Figure 8. Deindustrializing Counties and Unemployment Following the 2008-2009 Financial Crisis



Note: County-level correlation between the decline in manufacturing employment share between 1970 and 2015, and the average rate of unemployment 2010-2015.

Appendix

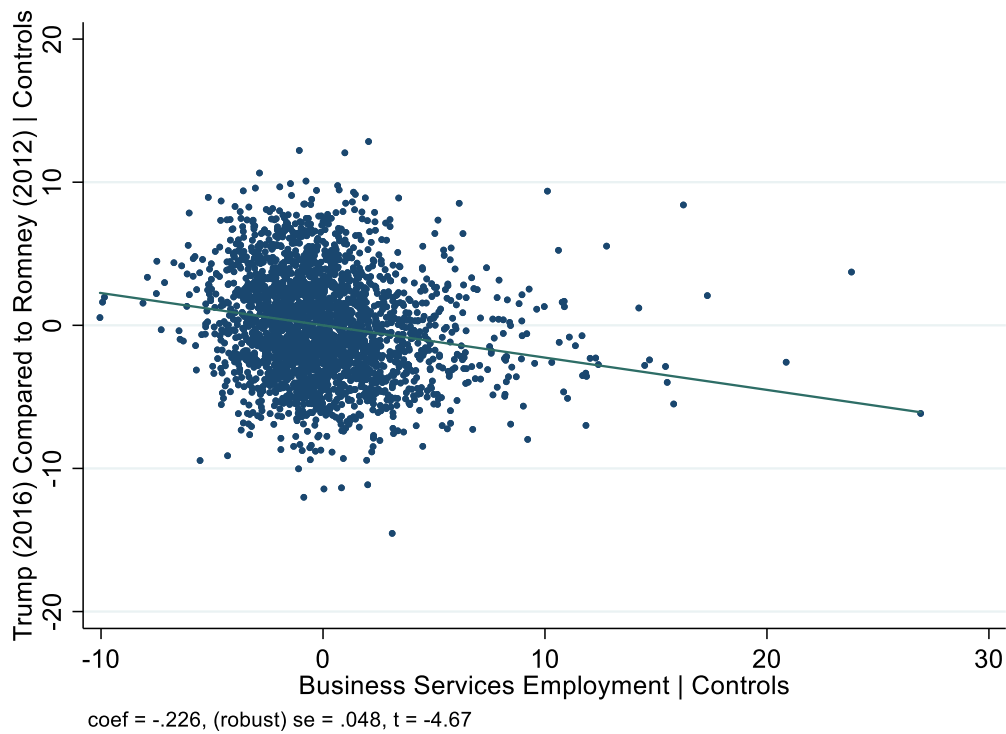
Table A1. OLS Estimates of Trump's (2016) Two-Party Vote Share Compared to Romney's (2012) Two-Party Vote Share.

	(1)	(2)	(3)	(4)
Over 65 (% Pop.)	0.244*** (0.039)	0.242*** (0.039)	0.235*** (0.038)	0.232*** (0.039)
White (% Pop.)	0.045*** (0.011)	0.045*** (0.011)	0.048*** (0.012)	0.054*** (0.012)
Hispanic (% Pop.)	-0.106*** (0.011)	-0.106*** (0.011)	-0.107*** (0.011)	-0.107*** (0.010)
Ln Wage	3.907*** (0.969)	3.944*** (0.971)	3.941*** (0.962)	3.865*** (0.931)
Female (% Pop.)	0.036 (0.087)	0.035 (0.086)	0.038 (0.087)	0.039 (0.087)
College (% Pop.)	-0.260*** (0.019)	-0.261*** (0.019)	-0.254*** (0.020)	-0.242*** (0.019)
Ln Population	-0.295* (0.160)	-0.303* (0.160)	-0.304* (0.164)	-0.303* (0.166)
Business Services (2015)	-0.226*** (0.048)	-0.226*** (0.048)	-0.226*** (0.049)	-0.222*** (0.048)
Decline in MFG Empl. Share (1970 vs. 2015)	0.047*** (0.015)	0.048*** (0.015)	0.045*** (0.015)	-0.146*** (0.045)
China Shock (2000-2015)		-0.030 (0.023)		
Average Unemployment (2010-2015)			0.068 (0.083)	-0.107 (0.079)
Average Unemployment (2010-2015) x Decline in MFG Empl. Share				0.024*** (0.005)
Observations	2605	2605	2605	2605
R-squared	0.732	0.732	0.732	0.738

Note: OLS regressions using country-level data. Election data from David Leip's Election Atlas. The demographic characteristics are from the US Census American Community Survey, 5-year estimates, 2013-2017. Average wage is from the Bureau of Labor Statistics in 2015. Business services employment is the share of worker employed in business services in 2015 as reported by US Bureau of Labor Statistics. Manufacturing employment data come from the Bureau of Economic Analysis and the US Bureau of Labor Statistics. Declines are computed such that positive values indicate a smaller share of workers employed in the manufacturing sector in 2015 compared to 1970. The China Shock measures changes in Chinese imports 2000-2015, weighted by county-level US employment in 2000, following Autor, Dorn, and Hanson (2013). For the construction of the China shock, the import data are from Comtrade; the employment data are from the County Business Patterns, using the scripts provided by David Dorn (<https://www.ddorn.net/data.htm>). Robust standard errors. A constant is estimated but not reported.

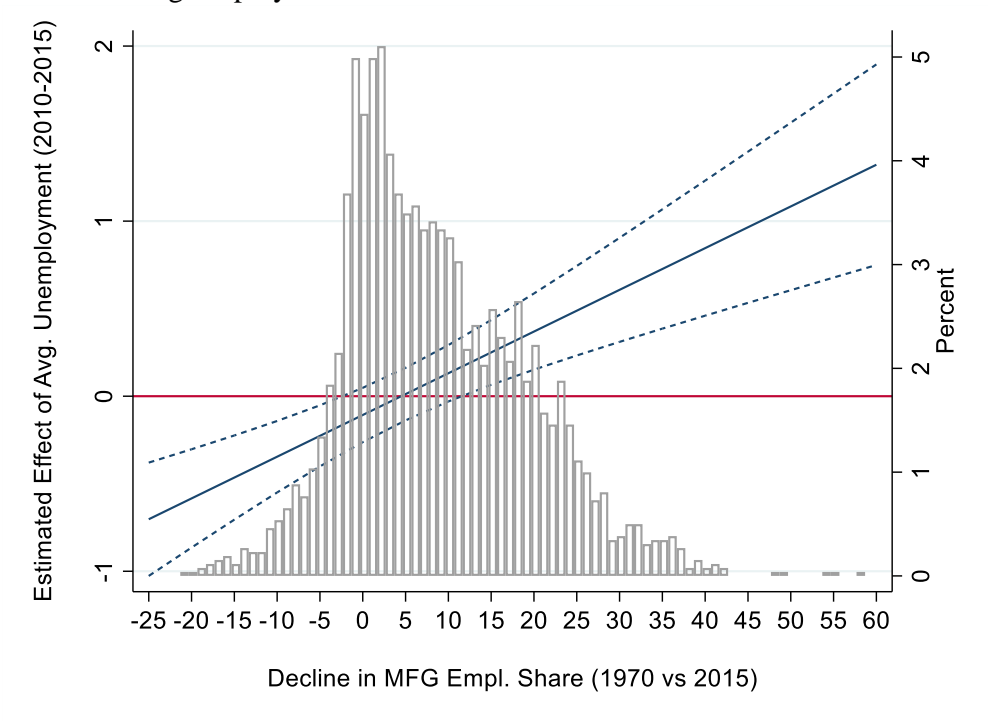
Estimates weighted by county population in 2000.

Figure A1. Business Services Employment and Support for Trump in the 2016 US Presidential Election (county-level regression estimates)



Note: This partial regression plot demonstrates the relationship between Trump support and the share of workers employed in Business Services, after controlling for demographic and economic variables. All variables are measured at the county-level. The full model estimates appear in Table A1, column 1.

Figure A2. The Estimated Effect of Unemployment on Support for Trump across Changes in Manufacturing Employment Shares



Note: Figure based on estimates appearing in Table A1, column 4.